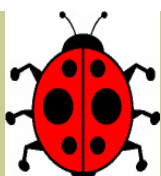


# Ponderings

## Water Garden Tour 2009 We Need Additional Water Gardens!

Volume XI, Issue 5

June 2009



### Ponders Calendar

#### June's Guest Speaker.

Our ponds attract all types of desert wildlife. Under the topic of "Dangerous Animals," Tom McDonald will be addressing scorpions, spiders, gila monsters, javelina, bobcats, and, of course, snakes. Presently serving as an adjunct faculty member in biology at Pima Community College, Tom was a former professor of neuroscience at Phillips University in Enid, OK, and conducted research on venoms in the Ion Channel Lab at the University of Arizona School of Medicine. *Let's see a great turnout for our June General Meeting!*

#### General Meeting

Thursday, **June 25TH** 7:30 PM @ Junior League of Tucson 2099 E River Road



**Program:**  
**"Dangerous Animals"** by Tom McDonald, Docent Instructor at Tohono Chul Park.

**Refreshments:** Glenn/Figueroa & Minami/Stolley  
*Share your extra plants & stuff!*

#### Board Meetings Date/Location

Sunday, **June 14th**,  
Tomczyk Residence,  
1:30 PM

Sunday, **August 16th**, E. Good Residence, 1:30 PM

Sunday, **September 13th**, McMacken Residence, 1:30 PM



#### NOTEWORTHY:

*May was a terrific month for welcoming new watergardening members, as well as seeing the renewal of previous year memberships. Thank you for your interest and participation in The Tucson Watergardeners!*

*Contact Elizabeth Good or Renee Shane-Boyd if you are interested in being on Water Garden Tour 2009! See the "Watergardening Classifieds" for their phone numbers and email addresses.*

#### Inside this issue:

|                               |   |
|-------------------------------|---|
| <i>Plant Sale In Review</i>   | 2 |
| <i>The Pondless Waterfall</i> | 3 |
| <i>White Arum Lily</i>        | 4 |

## Plant Sale In Review

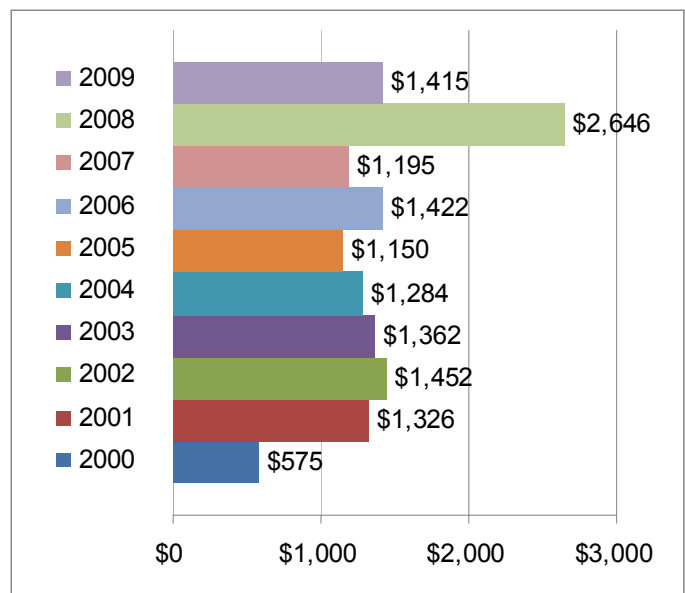


## President's Corner

Thank you to *everyone* who contributed in any way to our Annual Water Plant Sale. We have a positive cash flow for our Grant Fund in a year when the economy continues to struggle and our event expenses have increased! Kudos to Pam Glenn for Chairing the event again this year and managing the myriad of details that it takes to put this sale together. Pam always does an outstanding job of getting the club ready for this event! Also, thanks to Dan Jenks for Co-Chairing. A special note of appreciation to ALL of the volunteers who helped get things ready and to those folks that helped on the day of the Plant Sale. Finally, I want to thank all those members who contributed plants for the sale — without the plants there would be no Plant Sale !

Paul Roberts

## Annual Water Plant Sale 2000—2009 Net Profit (after expenses)



## The Pondless Waterfall

Looking for an idea for your next water feature? Something to consider is a pondless waterfall. This feature also goes by the name of recirculating waterfall or disappearing pondless waterfall. Essentially, this type feature is a waterfall *without* a pond. However, it does have an underground reservoir system. Advantages of a pondless waterfall include the fact that it can easily fit into limited space; is safer than ponds, particularly for children, pets, and public areas; attracts desert wildlife; and has less maintenance requirements, as it can be turned off with a flip of an electrical switch, making it a "dry" stream bed. There is no ecosystem that must be sustained on a 24/7 basis.

Just as with a pond, the pondless waterfall feature takes careful planning, particularly if the design includes a streambed or there are various ground elevations where the water feature is to be sited. There is excavation to be done and *lots* of rock and gravel placement to be accomplished to give the waterfall and stream a natural

look. Both terrestrial and marginal bog plants can be used to soften the edges of this water feature.

In addition to the rock work, pondless waterfall components usually include a water reservoir, waterfall spillway, submersible pump equipment, vinyl liner, PVC piping, plumbing kits and check valves. With the high rate of water evaporation in the desert, auto-fill capability for the reservoir is highly recommended. For the adventuresome water gardener, components can be pieced together from home, hardware and even feed stores. The other alternative is to purchase a pondless waterfall kit from a reputable pond supply company. These kits usually are priced from \$400 on up –with pricing and equipment sizing based on the height of the waterfall and length of the stream design.

*Web Stuff*

<http://tucsonwatergardeners.org/>



### Watergardening Classifieds

**Wanted:** Water & Bog Gardens for our September 19th-20th Public Tour! All types of water and bog gardens will be considered throughout the Tucson Valley. Call Elizabeth Good, Tour Chair, 722-6449, email: [gandegood@msn.com](mailto:gandegood@msn.com) or Renee Shane-Boyd, Co-Chair, 326-5897, email: [rshane-boyd@gmail.com](mailto:rshane-boyd@gmail.com).

**Sell or Trade Water Garden Items.** Ad space is *free* to members! Write-ups on your water garden items must be in to the editor by the 4th of each month.

A gardener's best tool is the knowledge from  
previous seasons.

And it can be recorded in a \$2 notebook.

- Andy Tomolonis

|                        |               |  |
|------------------------|---------------|--|
| <b>President:</b>      | Paul Roberts  | <a href="mailto:paulrwi@aol.com">paulrwi@aol.com</a>         |
| <b>Vice President:</b> | Ken Canada    | <a href="mailto:kcanada1@cox.net">kcanada1@cox.net</a>       |
| <b>Treasurer:</b>      | Bill Hudson   | <a href="mailto:lloydhudson@cox.net">lloydhudson@cox.net</a> |
| <b>Secretary:</b>      | Wayne Tomczyk | <a href="mailto:waynet@us.ibm.com">waynet@us.ibm.com</a>     |

**Membership**

|                     |              |  |
|---------------------|--------------|--|
| <b>Recruitment:</b> | Tony Shrader | <a href="mailto:bluee3t@yahoo.com">bluee3t@yahoo.com</a> |
|---------------------|--------------|--|

**Programs:** Can you help us finish out our program season?

|                   |          |  |
|-------------------|----------|--|
| <b>Webmaster:</b> | HL Swain | <a href="mailto:hl@swain.net">hl@swain.net</a> |
|-------------------|----------|--|

|                |              |  |
|----------------|--------------|--|
| <b>Editor:</b> | JoAn Stolley | <a href="mailto:jstolley@cox.net">jstolley@cox.net</a> |
|----------------|--------------|--|





The Tucson Watergardeners  
7033 E Paseo San Andres  
Tucson, AZ 85710



*To help develop an interest in the creation and care of water gardens...*

## Aquatic Plant Profile



**White Arum Lily**  
**Zantedeschia**  
**Family: Araceae**

*Photo courtesy the Slonaker pond  
in Northwest Tucson.*

Making the rounds of the Southern Arizona Koi Association Pond Tour 2009 allowed for a glimpse of some unusual marginal plants. For example, it is possible to grow large, spectacular clumping specimens of White Arum lilies in the desert!

The Arum Lily, also called a Calla Lily, is a perennial bog plant (not a true lily) that thrives in marshy areas, and requires partial shade in our environment. This plant is best known for its showy spathes. In addition to a white-color spathe, cultivars are available in colors such as yellow, pink, orange, and purple. Feedback from the tour was that the White Arum Lily is the one that does best in our desert climate. This plant can reach 36"-48" in height. The common Arum Lily (*Zantedeschia Aethiopica*) has solid green leaves. *Zantedeschia Albomaculata* has spotted green foliage. Arum Lily leaves are arrow-shaped. As a word of caution, all parts of the Arum Lily are poisonous if ingested. Similar to the Taro, handling the Arum Lily can also cause skin irritation.

The Calla Lily was made famous in paintings, such as by the famed Mexican artist, Diego Rivera. However, South Africa is the origin of the Arum Lily.